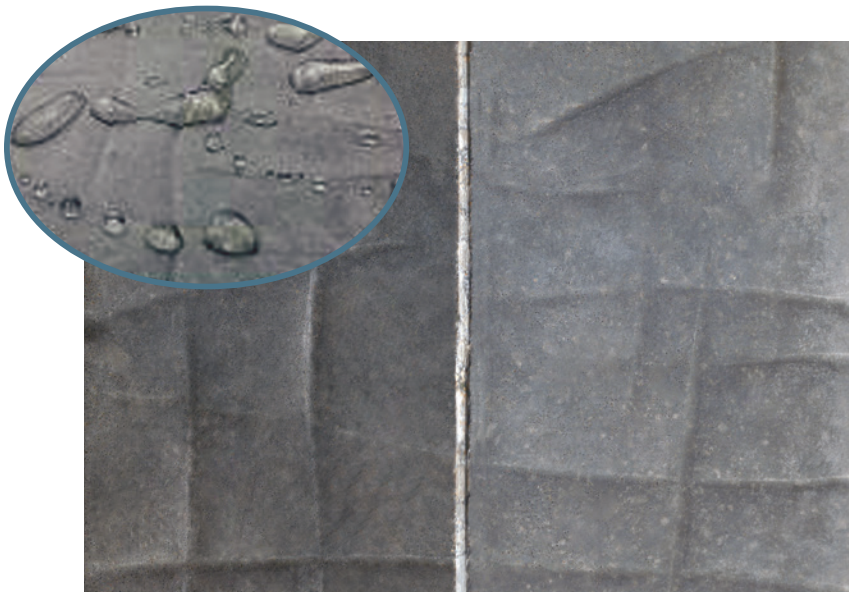




CLEMONS CONCRETE COATINGS

SUPREME SHIELD SB

SUPREME SHIELD SB is a solvent-based penetrating sealer designed for stamped concrete, concrete pavers and other porous concrete surfaces. Application of **SUPREME SHIELD SB** will enhance the color and give the wet look without adding the gloss and plastic look associated with traditional film forming sealers. Once treated, the surface repels water and oil to prevent staining.



Sealed on left and Unsealed on right



★ **Enhances & Preserves
Natural Color**

★ **Water & Salt Resistant**

★ **Stain & Oil Resistant**

★ **Immediate Results**

★ **Easy To Use**

★ **Available In Low VOC**

SUPREME SHIELD SB

DESCRIPTION

SUPREME SHIELD SB is a penetrating solvent-based sealer designed for stamped concrete and concrete pavers. Application of **SUPREME SHIELD SB** will enhance the color and give a wet look without adding the gloss and plastic look associated with traditional film forming sealers. Once treated, the surface repels water and oil to prevent staining.

FEATURES

★ Stain & Oil Resistant ★ Wet Look Without Plastic Look ★ Water Resistant ★ Enhances & Preserves Natural Color

PREPARATION

Clean dirt, wax, grease, oil, and other contaminants from the surface. Be sure to remove any foreign coating unless previous coating is same or similar solvent based sealer or stain. Make sure the surface is clean, dry, and sound. Clean oily concrete with Clemons' **CONCRETE CLEANER DEGREASER NEUTRALIZER** or other degreasing soap. Use a bristle brush for heavily oiled spots. If surface is not adequately porous, etch with Clemons' **ETCH & CLEAN**. Rinse well with a pressure washer. Allow 24 hours to dry. Apply only when surface and air temperatures are above 50° F and below 90° F. For pavers, sweep away any loose sand.

APPLICATION

Brush may be used where roller or sprayer won't reach. Do not pour directly from can to concrete. Apply evenly from can or other metal container with appropriate roller. If rolling, use a solvent resistant nap roller. Every few feet turn perpendicular to the first coat, and cross roll without re-dipping. The continual dipping with the first coat gives a heavy application and the cross-rolling allows for an even application. Do not allow to puddle. If spraying, use an acetone resistant pump sprayer and clean up immediately with aromatic solvent such as A-1 Solvent or Xylene. Do not thin product. Foot traffic should be avoided for 4 hours. Vehicle traffic should be avoided for 48 hours. Cooler temperatures or increased humidity will slow the dry.

NET COVERAGE RATE

Two thin coats are recommended. Over application may result in a slick surface.

Textured or Stamped:	200 ft ² per gallon
Broom Swept:	200 ft ² per gallon
Concrete Pavers:	75 ft ² per gallon

TROUBLESHOOTING

If surface becomes slick or blisters due to over application, soak the surface with A1 Solvent or Xylene and roll.

CLEANUP

Clean tools with A1 Solvent, Xylene or Acetone.

MAINTENANCE

Clean sealed surface with water and detergents as needed. Re-seal surface every two years or as needed to prevent buildup of sealer.

TECHNICAL DATA

VOC: standard <600 g/L
VX <350 g/L
VC <100 g/L
Flash Point: 0° F

HMIS			
Health	2	Flammability	3
Reactivity	0	Protection	B

DISCLAIMER: Since manufacturer has no control over handling, use or storage; no guarantee expressed or implied, is offered. The suitability of the product for use shall be solely up to the user. Manufacturer retains the right to venue.

Made in U.S.A.

CLEMONS CONCRETE COATINGS

505 Cave Rd ★ Nashville TN 37210 ★ www.ccc-usa.com ★ Tel: 615-872-9099 ★ Fax: 615-872-9052